



GENERAL SPECIFICATION

EST46LF

For vehicles 5.2t GVW and above

16.5m

Maximum working height*

Maximum working horizontal outreach*



7.3m or



8.3m

with optional load sensing system

- Standard platform capacity 200kg SWL for two person operation as standard, or 120kg SWL for optional one person load sensing system for extra outreach.
- Telescopic main boom, with steel inner and outer, articulates from -7° to $+80^{\circ}$. Lower articulated boom limited to 45° as standard, full 70° available to special order on selected 7.5t GVW vehicles only.
- Fly boom (jib) with 110° working vertical arc for optimised reach envelope, allowing easy access to the underside of bridges and decks.
- Fibreglass duck under style bucket for two-man operation, with integral finger guard and two harness anchors. Benefits of fibreglass construction include evidential witness marks from accident damage and limited insulation.
- PTO powered from vehicle engine or gearbox depending on base vehicle.
- Two hydraulic stabilisers (jacks) with controls on dashboard in cab. When deployed the stabilisers are within the vehicle width, including mirrors.
- One-hand joystick proportional controls at bucket, with protective weather cover.
- Ground controls on a 5m wander lead enables full sight of bucket whilst in use, facilitating safe operator training, emergency operation and demonstration facility.
- Emergency power pack for the operation of all boom functions. Operable from the bucket or ground level controls, enabling the safe and controlled return of platform to the ground from all positions and uses the vehicle battery.
- Safety lock valves on ALL hydraulic cylinders.
- Emergency engine stop / restart at both bucket and ground level controls.
- Stabiliser / boom interlocks prevent the operation of booms without jacks correctly deployed, or retraction of jacks with the booms raised.
- PTO / Handbrake interlock with audible warning if handbrake released with PTO engaged.
- 360° rotation (non continuous), additional options also available.
- Purpose designed mounting frame to vehicle manufacturer's requirements, fitted to the vehicle within the load area.
- Roof mounted boom stowage guide and stowage cup, plus safety interlock.
- Outer boom, fly boom and pedestal painted Versalift standard yellow BS381C-355, inner boom powder coated black and white GRP bucket.
- Includes service operator / service manual and 12 month parts and labour warranty, on site wherever possible.
- Typical spare payload of 1300kg on 5.0t GVW vehicles, calculated with fuel plus driver and passenger.

*all figures are subject to mounting vehicle

CE approved and certified to EN280A1 & 2006/42/EC
www.versalift.co.uk
Versalift is an ISO 9001:2008
certified company by
TUV UK Ltd
GB00468



Training

The Versalift repair and maintenance (R&M) contracts are the best way to fix the running costs of your new access platform for up to 7 years.

For a fixed price which can be paid monthly or annually where we supply all repairs, servicing and thorough examinations for the term of the contract. The only exclusions are accidental damage, misuse and abuse.



Repair & Service contract ET range

All labour and materials to cover repair and maintenance of the Versalift equipment including the twice annual on site service and inspection of

Versalift equipment, including a thorough inspection and certification to meet LOLER standards, by an authorised Versalift engineer. Includes all labour, travelling costs and routine service and repair materials for the contract period plus reports and certification, with the exception of repairs necessitated by accidental damage, misuse or abuse. Note: contract is for Versalift equipment only, including connections to the vehicle, **but not the carrying vehicle itself.**

5 Year
£6,811.00

4 Year
£4,915.00

3 Year
£3,292.00

We are an IPAF accredited training centre and offer a range of courses including IPAF (PAL Card), IAD, CAP, familiarisation and harness training at our custom built facility.

We will also gladly travel to a site of your choice and try to beat any quote that you have been given for training anywhere in the UK.

We offer training for all IPAF categories for up to 6 people, over one day (subject to model), which includes provision of appropriate MEWP's, course material, certification, registration, powered access license (PAL) card, operator's safety guide and log book.

For more information please call Lee Tibbles

office: 01536 721010
mobile: 07801 207868
or email training@versalift.co.uk



Why Versalift?

- We are the world's largest manufacturer of vehicle mounted access platforms
- Our product range encompasses working heights of 9 – 25m upwards
- We lead the field in product innovation and were the first to offer Walk-in Buckets, 'Jackless' operation and Low Voltage insulation to name a few
- Almost 100% parts stockholding at our 5,500 sqm purpose built factory in Burton Latimer. In emergencies we can get parts to you quickly
- We have a complete national service support
- Full servicing, maintenance packages & finance options are offered
- Renowned high residual values on our equipment
- Vehicle mounted access platforms are all we do unlike some companies where it is not a key part of their business
- You have a dedicated sales and service team to manage your needs

If you need any further information on any of our products or services please don't hesitate to contact us or visit our website at www.versalift.co.uk

For general enquiries – admin@versalift.co.uk
For sales enquiries – sales@versalift.co.uk

Heath Thompson
Regional Sales Manager
Tel: 07973956042
Email:
Heath.Thompson@versalift.co.uk

Office Telephone: 01536 721010

Dial 1 for service department
Dial 2 for spare parts
Dial 3 for new platform sales
Dial 4 for accounts department

Main fax: 01536 721111
Service dept fax: 01536 721110

Versalift Distributors (UK) Ltd
1 Altendiez Way
Latimer Park
Burton Latimer
Northants
NN15 5YT

www.versalift.co.uk
Versalift is an ISO 9001:2000
certified company by
TUV UK Ltd
GB00468



VEHICLE

Price each, ex VAT

Iveco Daily 70C17 EEV, Euro V, 7 tonne GVW, 3950mm wheelbase, H3 roof, with central locking, 13 pin electrics (6520), factory fit PTO Hydrocar 23 Z 4 (75076) and bodybuilders plug interface (8656), with internal spare wheel carrier and speed limiter – Programming of ECU required by dealer to activate for: Remote engine stop start on pin 2; PTO revs increase (50rpm) and throttle disengage.

£29,999.95
one available
only – new
model pricing
will be available
March/April 2014

Recommend options if fitting light bars and other electrical equipment - 180 amp alternator (110 amp is standard). Auxiliary battery and split charger

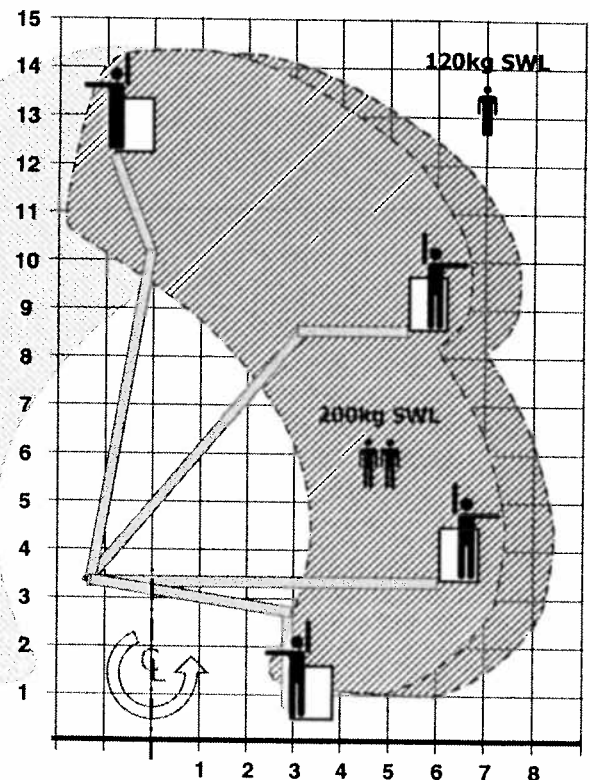
Please do not fit plylining to vehicle floor prior to platform installation as it will need to be removed

Provisional Weight Calculations EST46LF / Iveco Daily 70C17 Euro IV

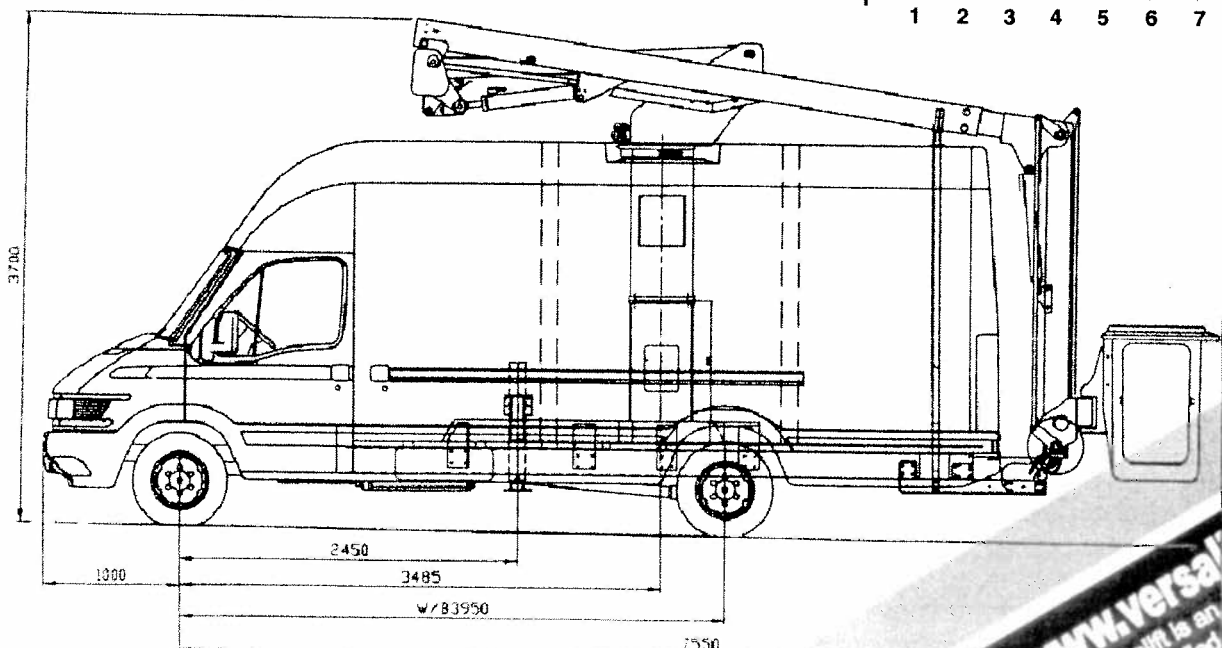
Spare Payload..... 1,550 kg

Payload includes driver, passenger and fuel.

These weights are typical and intended as a guide only.
Specific actual weights are subject to final specification.



EST46LF on Iveco Daily 70C



www.versalift.co.uk
Versalift is an ISO 9001:2008
certified company by
TUV UK Ltd
GB00488



Date: 21st February 2014
 Customer: Islington London Borough Council
 Quotation No: SE5882
 Quantity: One

QUOTATION

Price each, ex VAT

LAT160 telescopic access platform

£34,995.00

Maximum working height – 16.5m on **Daily**

Maximum horizontal outreach, two men 200kg SWL – 7.3m

Includes Telescopic and 110 degree fly-boom

Manufactured to our standard specification, including installation to vehicle. Tested in accordance with BSEN280: 2001, operator/parts/service manual, operator familiarisation and 12 months parts and labour warranty, on-site wherever possible.

Popular Additional Cost Options: (other options are available upon request)

BUCKET

- Walk-In Bucket (standard bucket has a duck-under entrance/exit) £980.00
- Non-slip mat in bucket £77.00 ✓

ELECTRICAL

- 2 x Amber Xenon flashing beacons to roof £262.00 ✓
- Interior strip lights 2 x 20W with diffuser (Invertec) £179.00 ✓
- 110-Volt power line, outlets at pedestal and bucket £257.00 ✓
- 12-Volt power line to bucket with work light £260.00 ✓
- Hot/cold electric hand wash unit c/w soap and towel dispenser £525.00
- Reversing camera, 3.5" colour LCD screen mounted to front screen £543.00 ✓
- Reverse alarm with night silent facility £160.00 ✓

MACHINE

- Low Voltage insulation, certified to 1Kv and flash tested to 3Kv (annual dielectric test required) £3,276.00 ?
- Stabiliser side door interlock for added safety when operating with 2+ people £173.00 X

RACKING

- Ply lining to sides, doors, floor and wheel arches - £452.00 ✓
- Plywood racking to offside c/w side-stops and 100mm lip £683.00
- As above but also with half-length nearside racking £1,100.00
- Metal racking, subject to vehicle and specification required - allow approx... £3,000.00

SAFETY MARKINGS

- Hi-Vis red and reflective yellow chevrons to rear doors – full height £435.00 ✓
- Hi-Vis red and reflective yellow chevrons to bucket £158.00 ✓
- Folding traffic direction arrow for rear door £260.00

OTHER

- Extended Warranty to three years parts and labour £1,308.00
- Delivery charge to site £245.00 ✓

Conditions (full terms and conditions available on request)

- **Validity:** from date of quotation 90 days
- **Payment terms:** 100% prior to release
- **Warranty:** Parts and labour on platform only, excluding misuse and abuse One Year

Delivery lead time:

Platform and a single van are in stock. Work can commence within 2-3 weeks of order or from receipt of van (according to Iveco new 70C17's will arrive in Autumn 2014) taking 8-10 weeks to complete however the earliest production slot at time of quote is mid-April 2014.

Please note that any deliveries quoted are current at the time of quotation and are subject to vehicle availability and prior orders placed. All prices are quoted in £ (pounds) Sterling and exclude VAT, which is chargeable at the prevailing rate. Unless stated otherwise, delivery costs are excluded. E & O.E. - Versalift will not accept any claims for consequential loss or damage under any circumstances, for a complete copy of Versalift terms and conditions, please contact 01536 721010